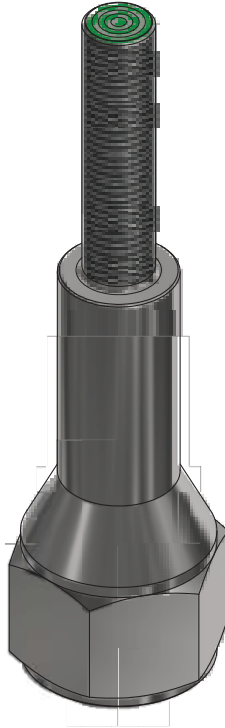


MODEL 71: 3/8-24  
MODEL 71M: M12-1



MODEL NUMBER

71-16568-DCA

PRODUCT LINE

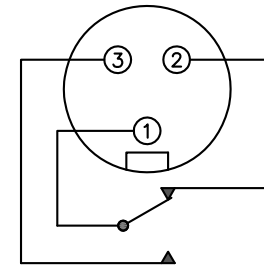
GO™ Switch 70 Series Hex Head

SPECIFICATIONS

Model	71 Model
Contact Form	SPDT
Sensing Range	0.040" end sensing
Outlet Position	Bottom of enclosure
Enclosure Material	316L Stainless Steel
Area Classification	UL General Purpose
Wiring Option	QDC, Mini, 3 pin
Regional Certification	No Regional Certification
Custom Field	

WIRING DIAGRAM

3 PIN MINI CONNECTOR – DCA  
SPDT FORM C



PIN 1 – COM (GREEN)  
PIN 2 – N/C (BLACK)  
PIN 3 – N/O (WHITE)

NAMEPLATE



Type 4X  
120VAC/4A; 24VDC/3A  
Conduit: 1/2 NPT



www.electrosupply.com  
sales@electrosupply.com  
1-800-663-6576