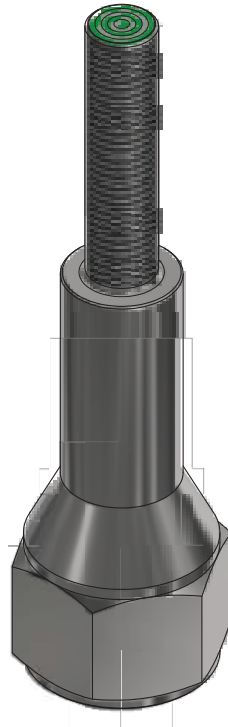


MODEL 71: 3/8-24
MODEL 71M: M12-1



MODEL NUMBER

71-16562-F2

PRODUCT LINE

GO™ Switch 70 Series Hex Head

SPECIFICATIONS

Model	71 Model
Contact Form	SPDT
Sensing Range	0.040" end sensing
Outlet Position	Bottom of enclosure
Enclosure Material	316L Stainless Steel
Area Classification	HiTemp, 400°F
Wiring Option	HiTemp leads, Teflon, 3ft
Regional Certification	No Regional Certification
Custom Field	

WIRING DIAGRAM

PVC/PTFE LEADS - 4 WIRE
SPDT



NAMEPLATE



-40°C ≤ Ta ≤ 204°C;
120VAC/4A; 24VDC/3A
Conduit: 1/2 NPT



www.electrosupply.com
sales@electrosupply.com
1-800-663-6576