

HRC FORM II CLASS C FUSES

600 VAC-600 Amperes



Description

HRCII-C fuses are stud-mounted fuses designed to British standard dimensions. They are generally used for motor short-circuit protection in dead-front holders, and are normally required to be used in conjunction with a motor running overload device.

Specifications

Voltage Rating:	600 VAC, 460 VDC
Interrupting Rating:	200 kA rms symmetrical AC 40 kA rms symmetrical DC
Ampere Range:	2–600 A
Approvals:	CSA Certified to Standard C22.2 No. 106-M90 (File No. LR90341) IEC 269-1&2

Dimensions in inches (mm)

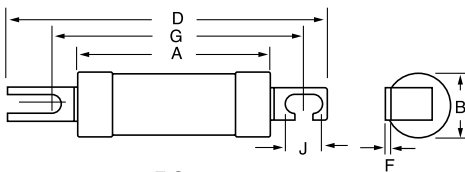


FIG. 1

Recommended Fuseholders

DF30F, DF30B, DF30FB (2-30 A)	00DF030.ZX
DF60F, DF60B, DF60FB (40-60 A)	00DF060.ZX
DF100F, DF100B, DF100FB (80-100 A).....	00DF100.ZX

Specify Fuseblock Terminations F=Front, FB=Front/Back, B=Back
With part # suffix (Example: 600 V 30 A Dead front Holder
with Front/Back termination 00DF030.ZXFB)

Ordering Information

FUSE		FUSE-HOLDER SYSTEM NUMBER	AMPS	FIGURE NO	DIMENSIONS IN INCHES (mm)					
CATALOG NUMBER	SYSTEM NUMBER				A	B	D	F	G	J
02C0002	02C0002.Z	00DF002.ZX	2	1	56 (2.2)	21 (0.83)	85 (3.3)	1 (0.04)	73 (2.87)	7.5 (0.29)
02C0004	02C0004.Z	00DF004.ZX	4	1	56 (2.2)	21 (0.83)	85 (3.3)	1 (0.04)	73 (2.87)	7.5 (0.29)
02C0006	02C0006.Z	00DF006.ZX	6	1	56 (2.2)	21 (0.83)	85 (3.3)	1 (0.04)	73 (2.87)	7.5 (0.29)
02C0010	02C0010.Z	00DF010.ZX	10	1	56 (2.2)	21 (0.83)	85 (3.3)	1 (0.04)	73 (2.87)	7.5 (0.29)
02C0015	02C0015.Z	00DF015.ZX	15	1	56 (2.2)	21 (0.83)	85 (3.3)	1 (0.04)	73 (2.87)	7.5 (0.29)
02C0020	02C0020.Z	00DF020.ZX	20	1	56 (2.2)	21 (0.83)	85 (3.3)	1 (0.04)	73 (2.87)	7.5 (0.29)
02C0025	02C0025.Z	00DF025.ZX	25	1	56 (2.2)	21 (0.83)	85 (3.3)	1 (0.04)	73 (2.87)	7.5 (0.29)
02C0030	02C0030.Z	00DF030.ZX	30	1	56 (2.2)	21 (0.83)	85 (3.3)	1 (0.04)	73 (2.87)	7.5 (0.29)
02C0040	02C0040.Z	00DF040.ZX	40	1	57 (2.24)	26 (1.02)	88 (3.45)	1.6 (0.06)	73 (2.87)	7.5 (0.29)
02C0050	02C0050.Z	00DF050.ZX	50	1	57 (2.24)	26 (1.02)	88 (3.45)	1.6 (0.06)	73 (2.87)	7.5 (0.29)
02C0060	02C0060.Z	00DF060.ZX	60	1	57 (2.24)	26 (1.02)	88 (3.45)	1.6 (0.06)	73 (2.87)	7.5 (0.29)
02C0080	02C0080.Z	00DF080.ZX	80	1	68 (2.88)	36 (1.42)	110 (4.33)	2.4 (0.09)	93 (3.7)	—
02C0100	02C0100.Z	00DF100.ZX	100	1	68 (2.88)	36 (1.42)	110 (4.33)	2.4 (0.09)	93 (3.7)	—

Up to 600 A available. Contact factory for higher amperages.