



**MODEL NUMBER**

11-61527-A2

**PRODUCT LINE**

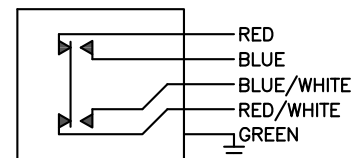
GO™ Switch 10/20 Series

**SPECIFICATIONS**

Model	11 Model
Contact Form	DMDB, (Form Z) Latching
Sensing Range	Standard approx. 3/8" side
Outlet Position	Bottom of enclosure
Enclosure Material	Stainless steel
Area Classification	cUL General Purpose
Wiring Options	3ft PVC lead wire
Regional Certification	No regional certification
Custom Field	

**WIRING DIAGRAM**

PVC/PTFE LEADS – 5 WIRE  
DMDB



**NAMEPLATE**



TYPE 4X  
ELECTRICAL RATING: 120VAC/10A, 24VDC/3A RESISTIVE; 480VAC/240VDC MAX

Model #:

Serial #:



www.electrosupply.com  
sales@electrosupply.com  
1-800-663-6576