

MODEL NUMBER

11-51536-A3

PRODUCT LINE

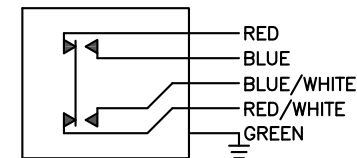
GO™ Switch 10/20 Series

SPECIFICATIONS

| | |
|------------------------|----------------------------|
| Model | 11 Model |
| Contact Form | DMDB, (Form Z) |
| Sensing Range | Standard approx. 3/8" side |
| Outlet Position | Bottom of enclosure |
| Enclosure Material | Brass w/polyurethane |
| Area Classification | CSA/FM CI I, Div 2 |
| Wiring Options | 6ft PVC lead wire |
| Regional Certification | No regional certification |
| Custom Field | |

WIRING DIAGRAM

PVC/PTFE LEADS – 5 WIRE
DMDB



NAMEPLATE



CL I DIV 2, GRPS A,B,C,D; CL II DIV 2, GRPS F,G; CI III;
T₁:T₂ - 50°C - T₃ - 60°C/90°C
ELECTRICAL RATING: 120VAC/10A, 24VDC/3A RESISTIVE; 480VAC/240VDC MAX
LEAD SEAL IS REQUIRED WITHIN 16" OF ENCLOSURE.

Model #:

Serial #:



www.electrosupply.com
sales@electrosupply.com
1-800-663-6576