



**MODEL NUMBER**

11-51523-B2

**PRODUCT LINE**

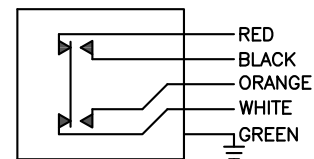
GO™ Switch 10/20 Series

**SPECIFICATIONS**

Model	11 Model
Contact Form	DMDB, (Form Z)
Sensing Range	Standard approx. 3/8" side
Outlet Position	Bottom of enclosure
Enclosure Material	Stainless steel
Area Classification	UL CI I, Div 1
Wiring Options	3ft PVC cable
Regional Certification	No regional certification
Custom Field	

**WIRING DIAGRAM**

SO CABLE – 5 WIRE  
DMDB



**NAMEPLATE**



CL I DIV 1, GRPS A,B,C,D; CL II DIV 1, GRPS E,F,G; CL III, TYPE 4X  
ELECTRICAL RATING: 120VAC/10A, 240VAC/2A RESISTIVE; 480VAC/240VDC MAX  
STD. DUTY PILOT DUTY 120VAC; HEAVY DUTY PILOT DUTY 480VAC  
LEAD SEAL IS REQUIRED WITHIN 18" OF ENCLOSURE.

Model #:

Serial #:



www.electrosupply.com  
sales@electrosupply.com  
1-800-663-6576