

**MODEL NUMBER**

11-12316-A3

**PRODUCT LINE**

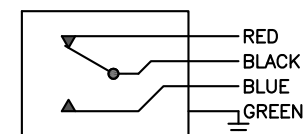
GO™ Switch 10/20 Series

**SPECIFICATIONS**

Model	11 Model
Contact Form	SPDT (Form C)
Sensing Range	Extended approx. 9/16" side
Outlet Position	Right of sensing area
Enclosure Material	Brass w/flat black lacquer
Area Classification	CSA/FM CI I, Div 2
Wiring Options	6ft PVC lead wire
Regional Certification	No regional certification
Custom Field	

**WIRING DIAGRAM**

PVC/PTFE LEADS - 4 WIRE  
SPDT



**NAMEPLATE**



COUNTRY OF ORIGIN US

CL I DIV 2, GRPS A,B,C,D; CL II DIV 2, GRPS F,G; CI III;  
T<sub>1</sub>:T<sub>2</sub> - 30°C - T<sub>3</sub> - 60°C/100°C  
ELECTRICAL RATING: 120VAC/10A, 24VDC/3A RESISTIVE; 480VAC/240VDC MAX  
LEAD SEAL IS REQUIRED WITHIN 16" OF ENCLOSURE.

Model #:

Serial #:



www.electrosupply.com  
sales@electrosupply.com  
1-800-663-6576