

MODEL NO.

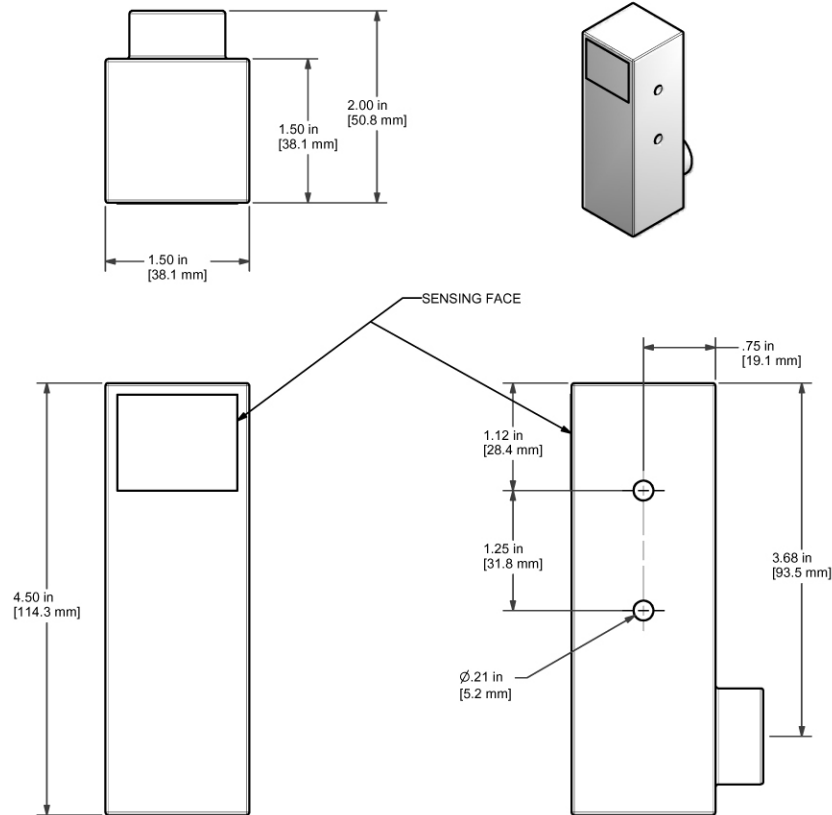
11-12110-00

PRODUCT LINE

GO Switch Leverless Limit Switches

SPECIFICATIONS

Model	GO Switch Model 11- 1-1/2" square x 4-9/16" overall
Contact Form	SPDT (Form C) contacts; 10A/120VAC,3A/24VDC
Sensing Range	Extended sensing - approx. 14mm (9/16") side sensing
Outlet Position	1/2" NPT conduit outlet behind sensing area
Enclosure Material	Brass - coated with flat black lacquer
Approvals	CSA/FM Cl I, Div 2, Grps A-D; Cl II, Div 2, Grps F&G; Cl III Terminal block
Wiring Options	Terminal Block
Temperature Rating	-40 °C - 176 °C



Electrol

www.electrolsupply.com
sales@electrolsupply.com
1-800-663-6576